

# BladeNeedleSYSTEM

Blade Remover | Needle Counter

## How to Use



Donawa Lifescience  
Consulting Srl  
Piazza Albania, 10  
00153 Rome, Italy



Clicksmart Pty Ltd.  
Level 1, 148 Boundary St, West End,  
Brisbane, QLD 4101, Australia  
+61-7-3844-1182 T  
hello@clicksmart.com | www.clicksmart.com

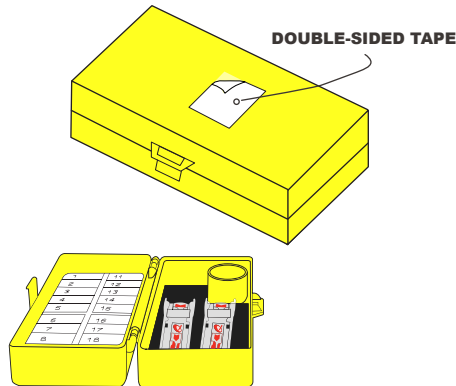


Dispose of as medical waste

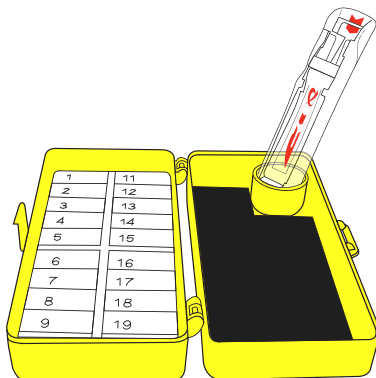
### PREPARE

#### USING TWO HANDS:

1. Remove the sterile packaging and peel the double-sided adhesive tape. Open the BladeNeedleSYSTEM and secure the device to a surface.



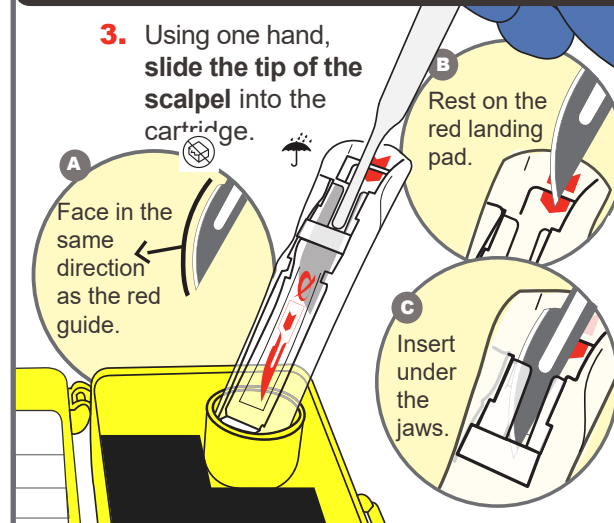
2. To remove a scalpel blade, place a cartridge into the round holder.



### BLADE REMOVAL

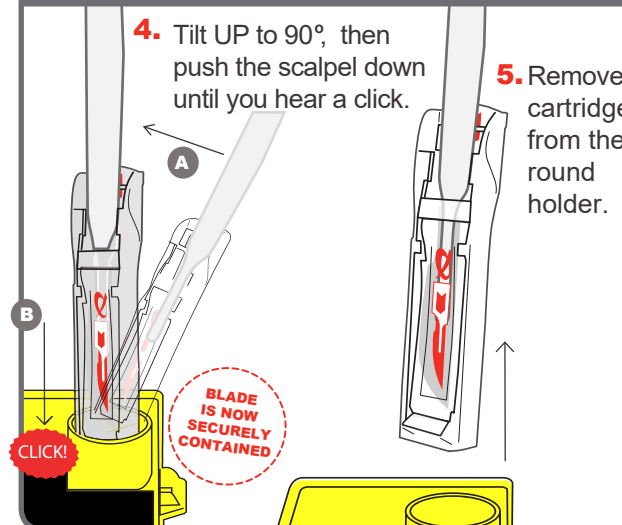
#### SINGLE HANDED:

3. Using one hand, slide the tip of the scalpel into the cartridge.



4. Tilt UP to 90°, then push the scalpel down until you hear a click.

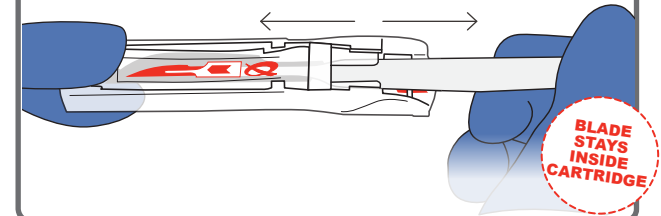
5. Remove cartridge from the round holder.



### SAFE

#### TO USE TWO HANDS:

6. Using two hands, pull out the scalpel handle. The blade is now ready for counting.

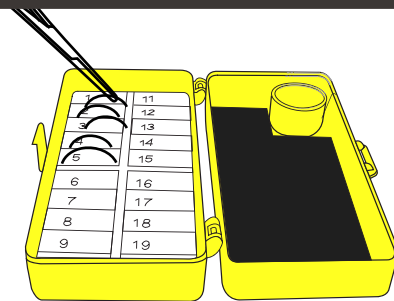


### NEEDLE COUNTER

- 7.

Insert the used needles into the foam as required.

Larger needles can be placed on the flat magnetic surface.



### DISPOSAL

8. Dispose of the needle counter and the cartridges separately into a sharps bin.

