

BladeSINGLE

One | Blade Remover

How to Use

CE EC REP
0 1 2 3

Donawa Lifescience
Consulting Srl
Piazza Albania, 10
00153 Rome, Italy

QLICKSMART®
... and be safe

Clicksmart Pty Ltd.
Level 1, 148 Boundary St, West End,
Brisbane, QLD 4101, Australia
+61-7-3844-1182 T

hello@clicksmart.com | www.clicksmart.com

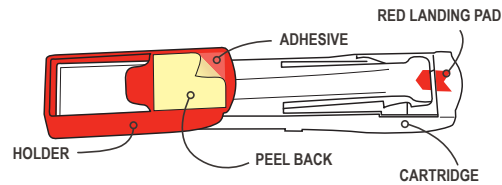
STERILE



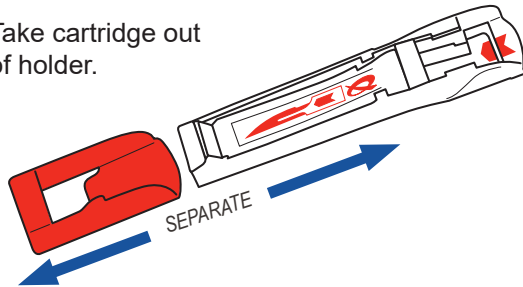
Dispose of as medical waste

PREPARE USING TWO HANDS:

1. Peel to reveal adhesive.



2. Take cartridge out of holder.



3. Fasten holder to drape or flat surface.

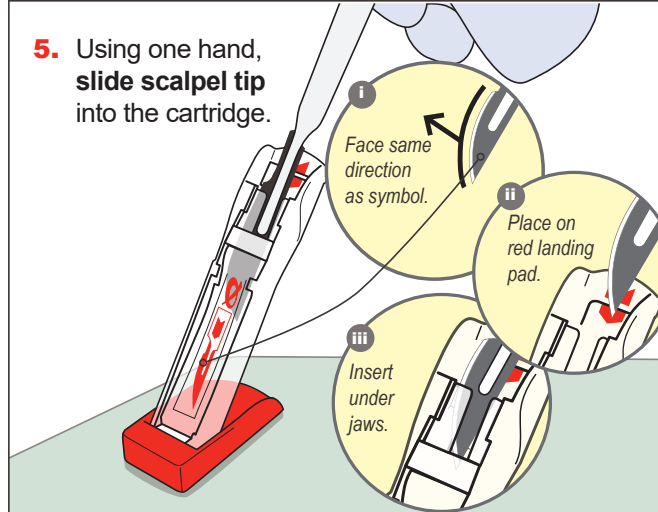


4. Stand in holder.

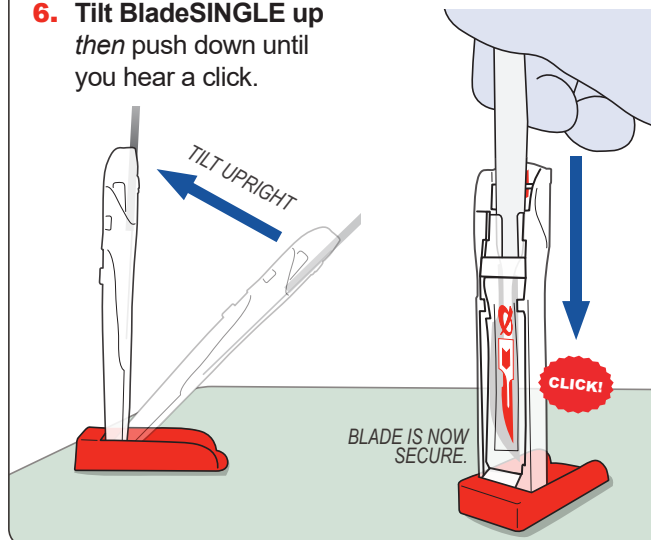


ACTIVATE SINGLE-HANDED ACTION:

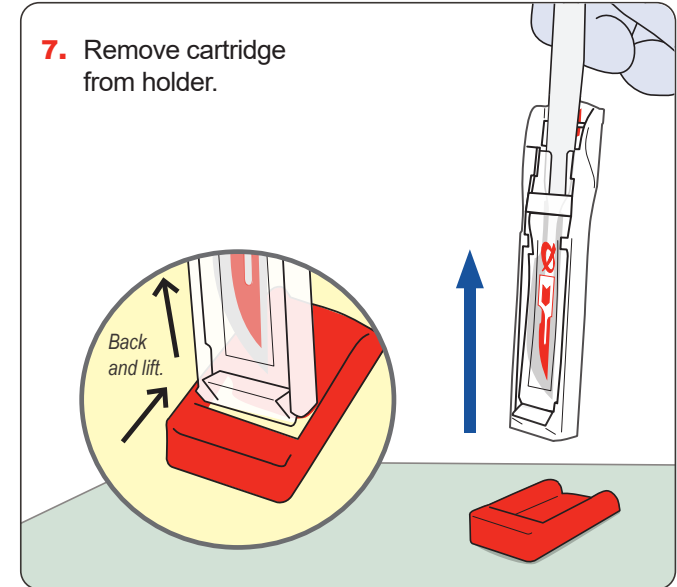
5. Using one hand, slide scalpel tip into the cartridge.



6. Tilt BladeSINGLE up then push down until you hear a click.

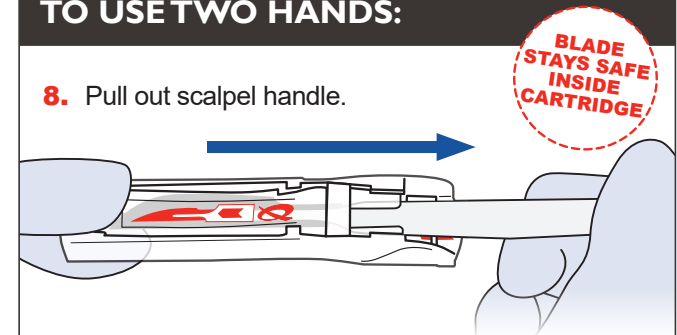


7. Remove cartridge from holder.



SAFE TO USE TWO HANDS:

8. Pull out scalpel handle.



9. Ready for counting and later disposal in sharps bin.

